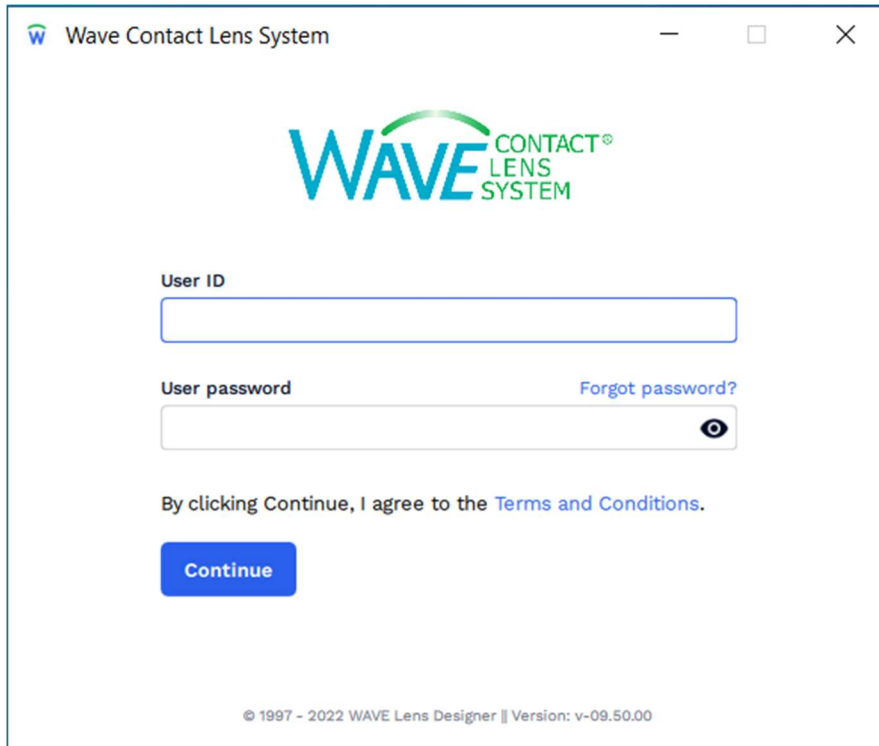


Linking Eaglet Eye Profiler to WAVE

Step 1:

Click on the **WAVE icon** and login



The screenshot shows a web browser window titled "Wave Contact Lens System". The window contains the WAVE CONTACT LENS SYSTEM logo at the top. Below the logo, there are two input fields: "User ID" and "User password". To the right of the "User password" field is a link that says "Forgot password?". Below the input fields, there is a line of text that reads "By clicking Continue, I agree to the [Terms and Conditions](#)." Below this text is a blue button labeled "Continue". At the bottom of the window, there is a small copyright notice: "© 1997 - 2022 WAVE Lens Designer || Version: v-09.50.00".

Step 2:

Make sure all Eaglet software windows are closed.

Step 3:

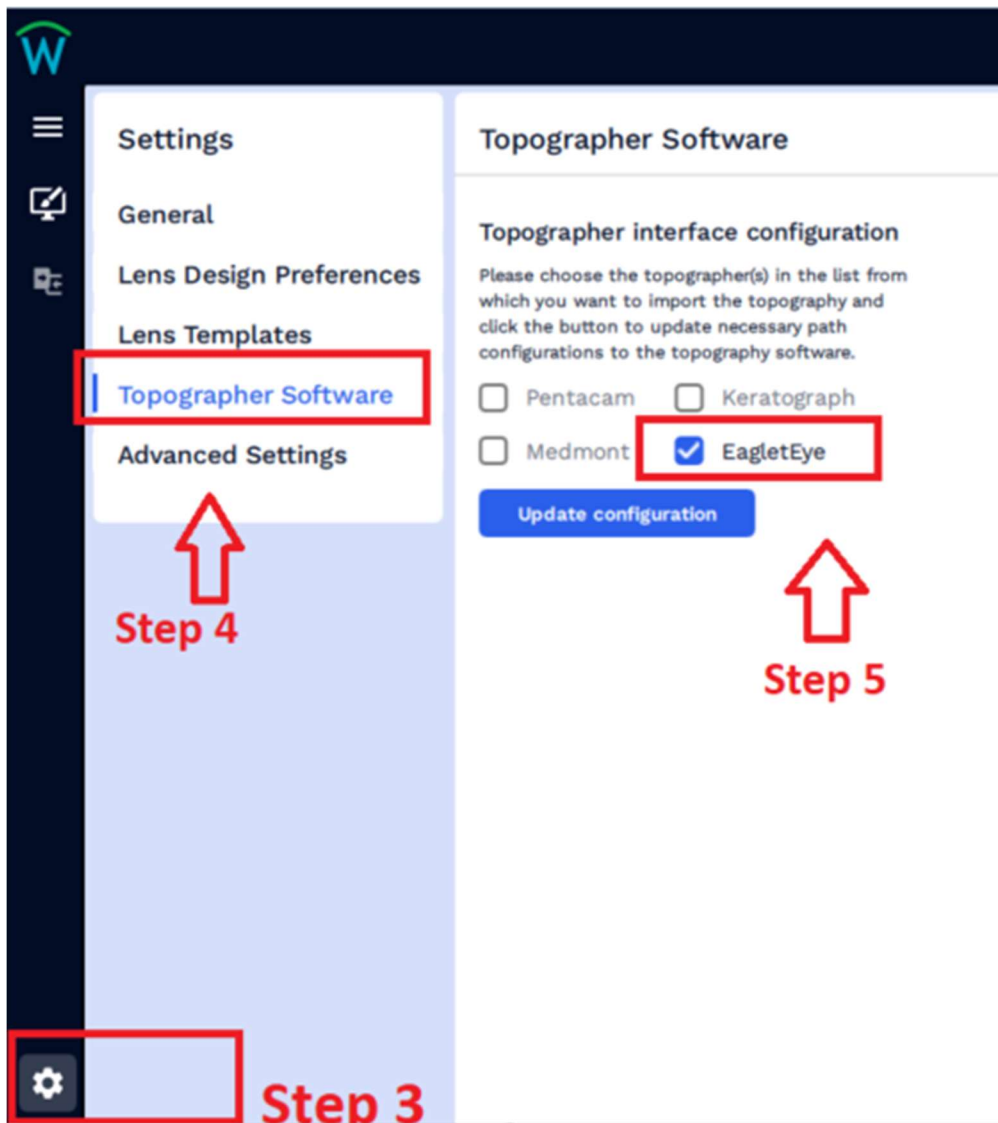
Click on the **Settings icon** (small gear) in the lower left-hand corner

Step 4:

On the Settings screen, select **Topographer Software**

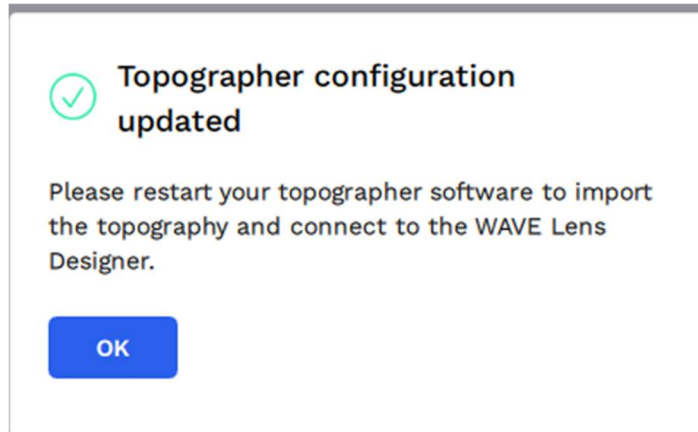
Step 5:

Put a check mark next to **EagletEye** and click on **Update configuration**



Step 6:

Topographer configuration updated will pop up

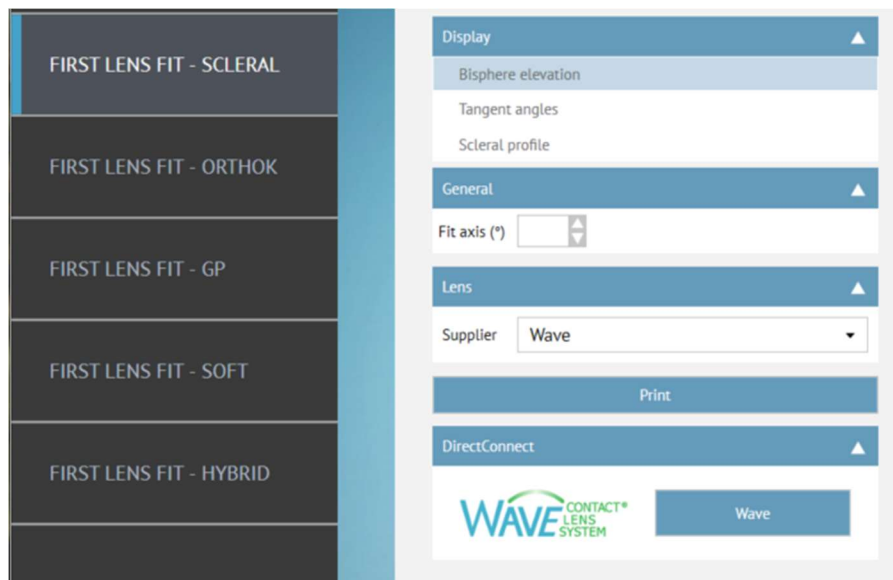


Step 7: Click **OK**

Step 8:

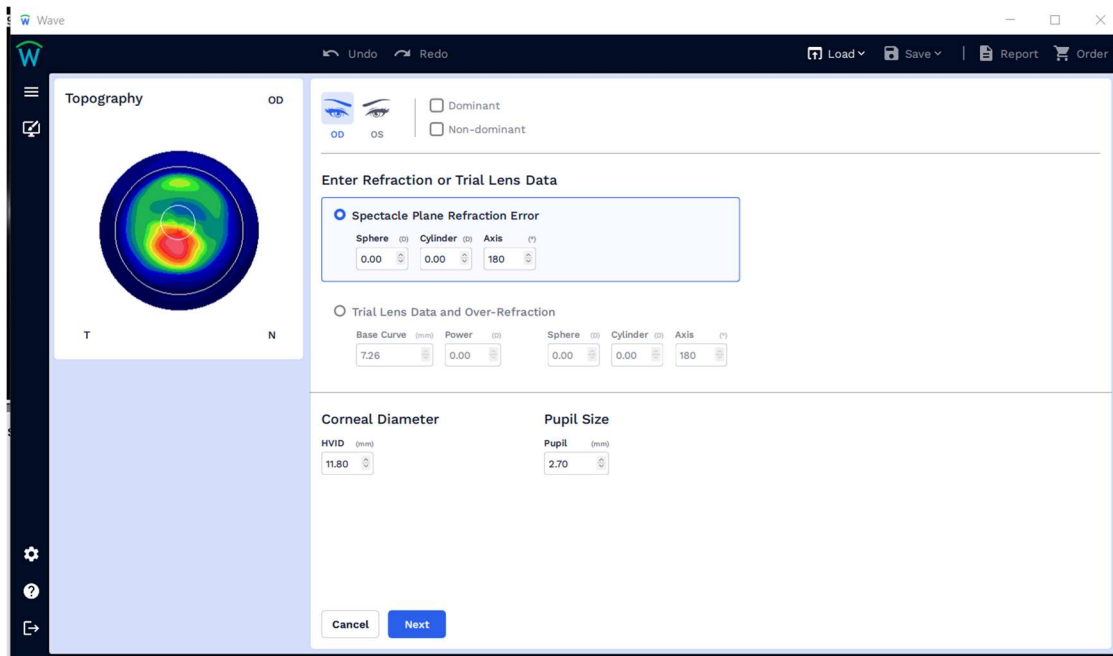
An active link is now established between the Eaglet and WAVE for importing the topography data into WAVE.

To test the import function, open the Eaglet software. Select a Patient's topography. Under First Lens Fit under Lens select Supplier '**Wave**'.



Step 9:

The WAVE Software will open. Log into WAVE. WAVE will now display the patient's topography map



If you have any technical problems or have any questions, please contact the WAVE Technical support team:

Phone: +1 (855) 655-2020

Email: info@wavecontactlenses.com

Website: wavecontactlenses.com/bookings

Document last updated 03.10.22