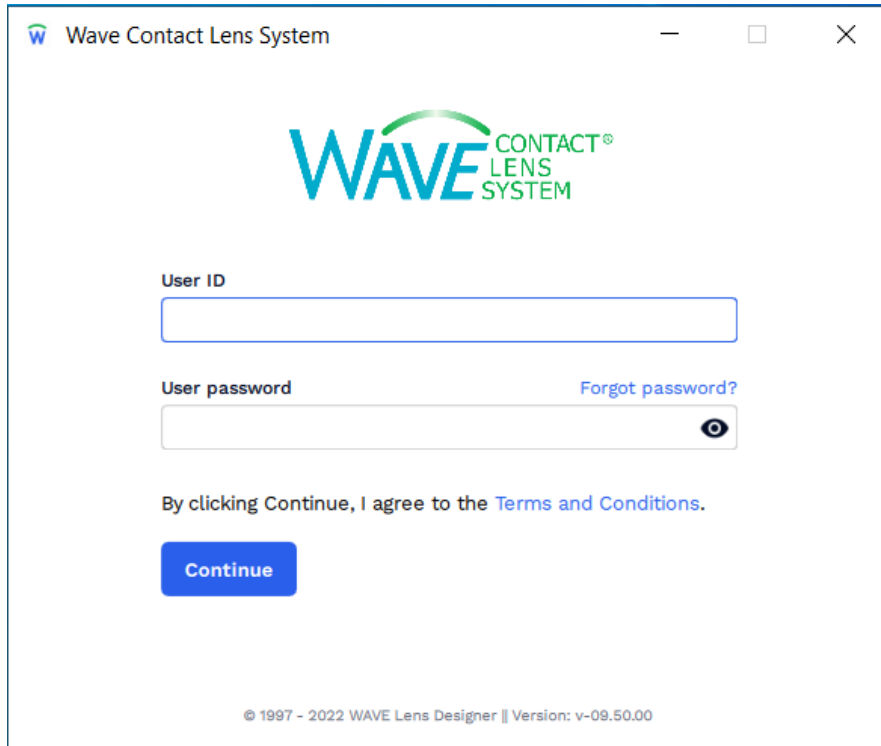


## Linking OCULUS Pentacam<sup>®</sup> to WAVE

### Step 1:

Click on the **WAVE icon** and login



The screenshot shows a web browser window titled "Wave Contact Lens System". The window contains the WAVE CONTACT LENS SYSTEM logo at the top. Below the logo, there are two input fields: "User ID" and "User password". The "User password" field has a "Forgot password?" link to its right and a toggle icon (an eye) to its left. Below the input fields, there is a line of text: "By clicking Continue, I agree to the [Terms and Conditions](#)." Below this text is a blue "Continue" button. At the bottom of the window, there is a small copyright notice: "© 1997 - 2022 WAVE Lens Designer || Version: v-09.50.00".

### Step 2:

Make sure all Pentacam<sup>®</sup> software windows are closed.

**Step 3:**

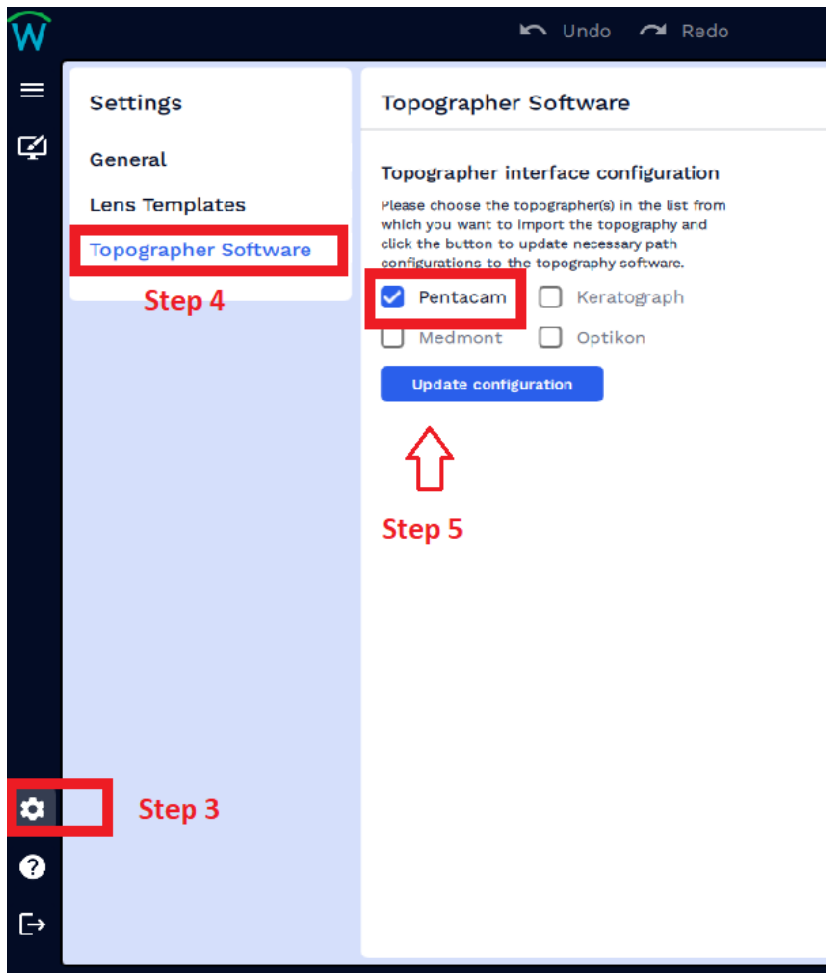
Click on the **Settings icon** (small gear) in the lower left-hand corner

**Step 4:**

On the Settings screen, select **Topographer Software**

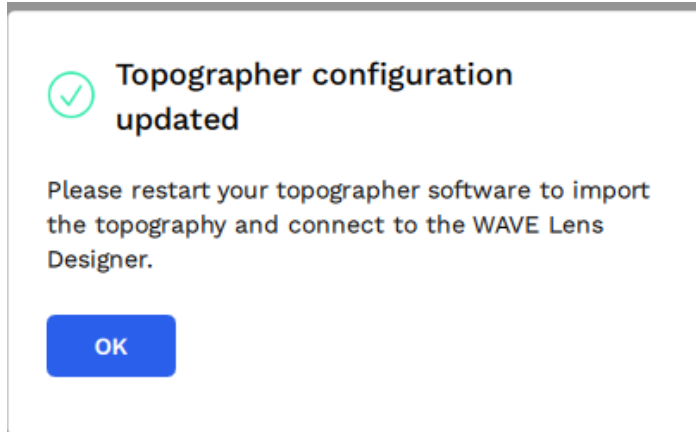
**Step 5:**

Put a check mark next to **Pentacam** and click on **Update configuration**



**Step 6:**

Topographer configuration updated will pop up

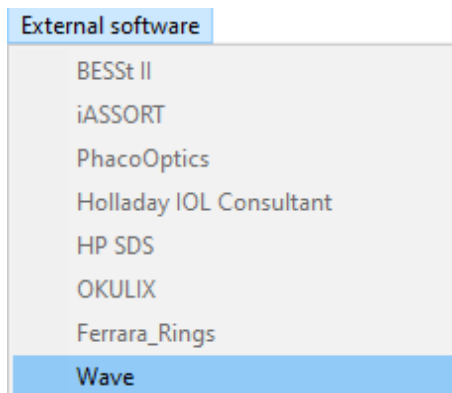


**Step 7:** Click **OK**

**Step 8:**

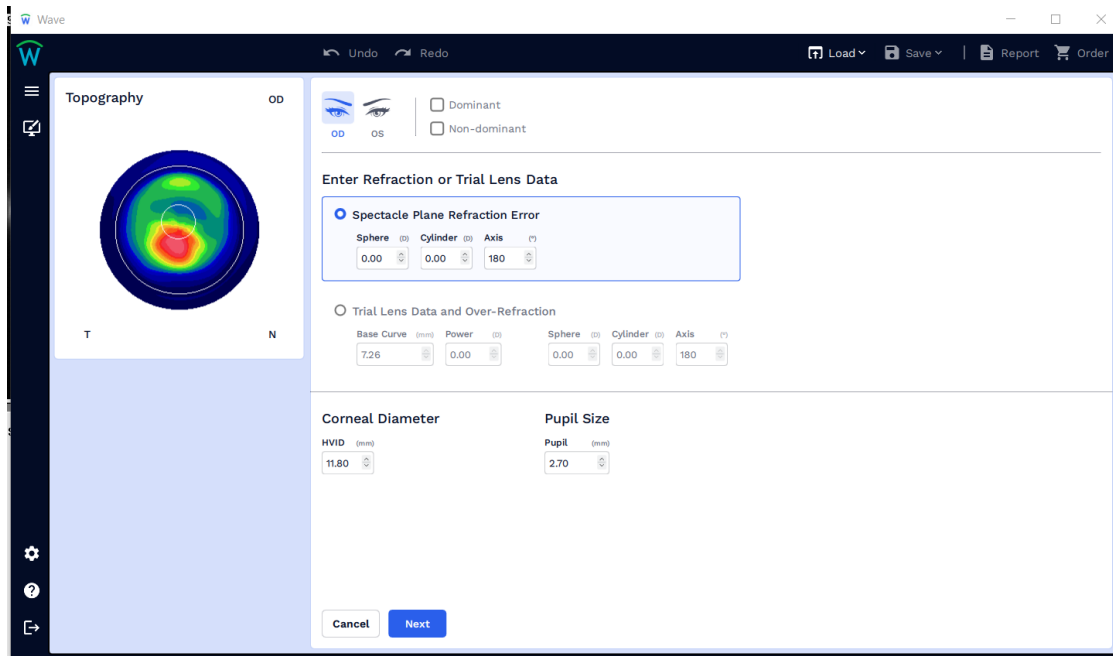
An active link is now established between the Pentacam<sup>®</sup> and WAVE for importing the topography data into WAVE.

To test the import function, open the Pentacam<sup>®</sup> software. Select a Patient's topography. Under **External Software** choose '**Wave**'.



### Step 9:

The WAVE Software will open. Log into WAVE. WAVE will now display the patient's topography map



If you have any technical problems or have any questions, please contact the WAVE Technical support team:

Phone: +1 (855) 655-2020

Email: [info@wavecontactlenses.com](mailto:info@wavecontactlenses.com)

Website: [wavecontactlenses.com/bookings](http://wavecontactlenses.com/bookings)

Document last updated 03.10.22