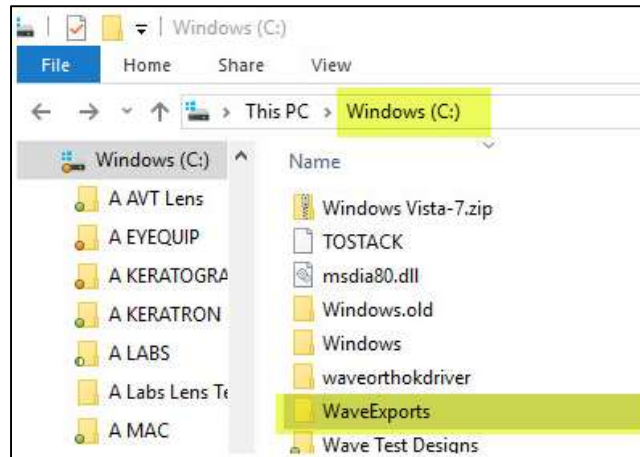


## Linking a Medmont Topographer to WAVE (For Medmont Studio 7)

**Step 1:** Create a folder on your **C: drive** and name it **WaveExports**.



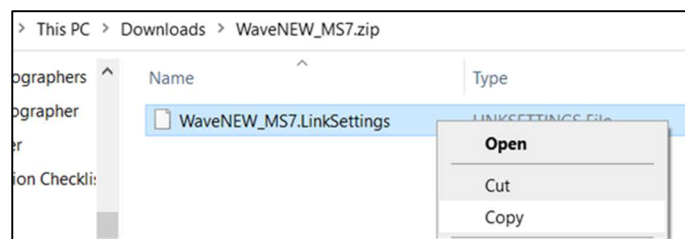
**Step 2:**

Go to the **Downloads** folder of your computer. Find **WaveNEW\_MS7.zip**.

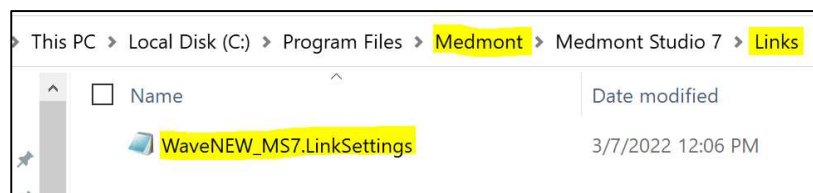
(If you do not see the **WaveNEW\_MS7.zip** or if you need to download it again, go back to our website and download it from the “[Linking a Topographer to WAVE](#)” webpage.)

**Step 3:**

Unzip the **WaveNEW\_MS7.zip** folder and copy the **WaveNEW\_MS7.LinkSettings** file



Paste the file into your **Medmont Links** folder.



Document last updated 03.10.22

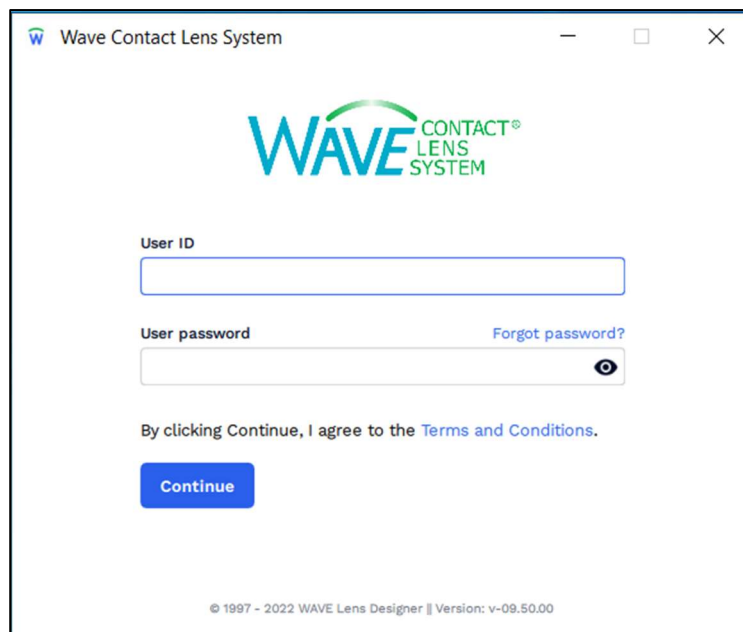
**Step 4:** Open the Medmont software. Select a topography map and click on the **Home** tab. You should now be able to see **Wave** icon in the **Linked Applications** section.

Click on the **Wave** icon and the Wave program will open.

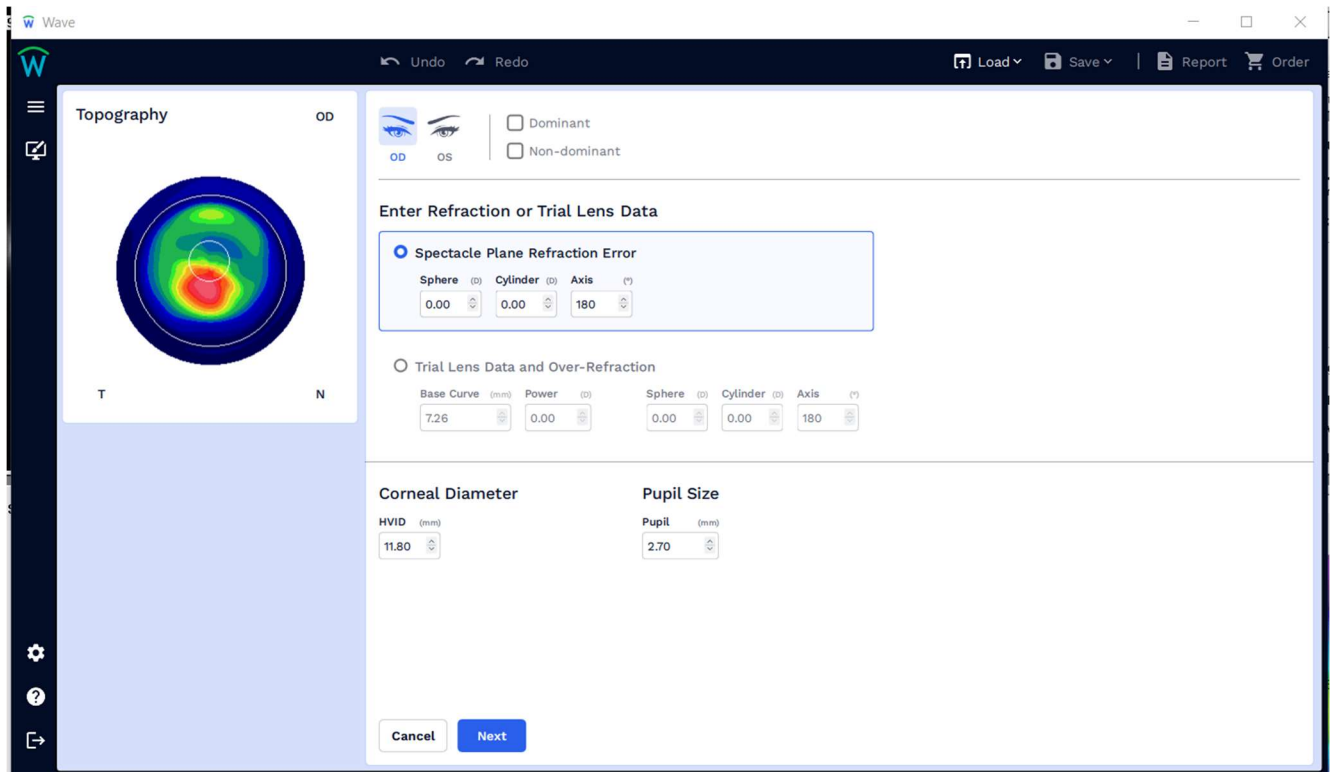


## Step 5

The WAVE Software will open. Log into WAVE.



WAVE will now display the patient's topography map.



If you have any technical problems or have any questions, please contact the WAVE Technical support team:

Phone: +1 (855) 655-2020

Email: [info@wavecontactlenses.com](mailto:info@wavecontactlenses.com)

Website: [wavecontactlenses.com/bookings](http://wavecontactlenses.com/bookings)